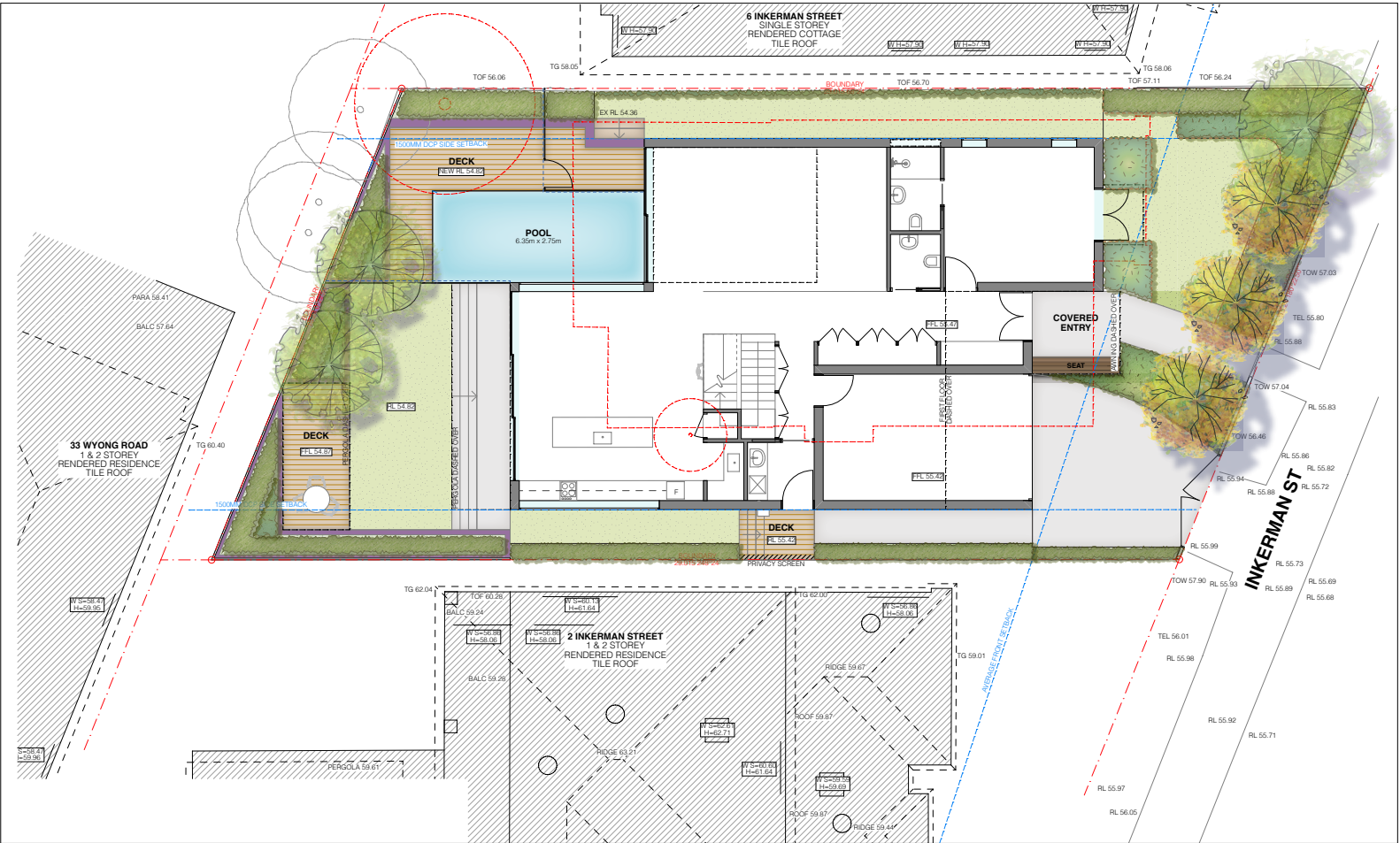


4 INKERMANS ST, MOSMAN NSW 2088

LANDSCAPE WORKS DEVELOPMENT APPLICATION

DRAWING LIST

No.	TITLE
LA-000	Cover sheet
LA-100	Landscape plan
LA-101	Landscape plan
LA-200	Landscape details
LA-300	Planting schedule
LA-301	Planting schedule & reference images



SITE PLAN - N.T.S



pds Paterson Design Studio
Landscape Architects / Urban Designers
Paterson Design Studio PTY. LTD
16a/1-15 Tramore Place
Killarney Heights, NSW 2087.
Registered Landscape Architect:
Garth Paterson FAILA Reg#716
BLA (CANB) MLAUD (HARV)
T +61 2 9452 4911
admin@pdsdesign.com.au
www.pdsdesign.com.au

NOTES.
DRAWINGS PRODUCED AND
PRINTED COLOUR

REV.	DESCRIPTION.	DWN.	CHK.	DATE.
A	Development Application Landscape Plan	FA	GP	27/05/20
B	DA Landscape Plan Amendments	DC	GP	01/06/20
C	DA Landscape Plan Amendments	DC	GP	24/06/21

PROJECT
4 INKERMANS STREET, MOSMAN NSW 2088

CLIENT.
JEHAN THIND &
LAURA PARK

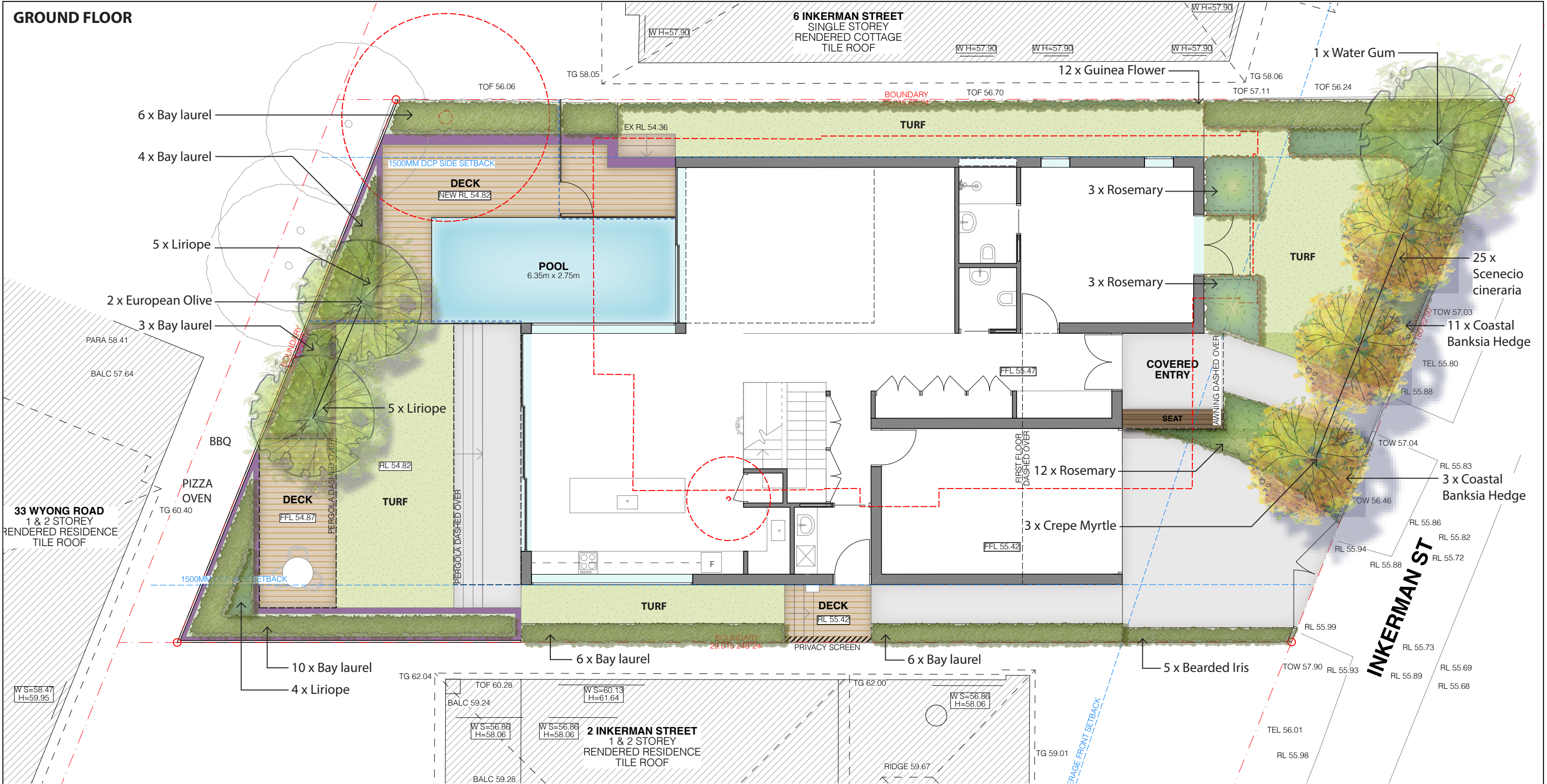
ARCHITECT.
ROTH ARCHITECTS

DRAWING TITLE.
LA-000 Cover sheet

DWN.
DC
CHK.
GP
DATE. 24/06/21

SHEET. A3
SCALE.

REVISION.
C
PROJECT NO.



KEY

Proposed evergreen tree, refer schedule & detail

Proposed deciduous tree, refer schedule & detail

1.2 - 1.8m ht hedge, refer schedule

Low grasses / groundcovers, refer schedule

Turf, refer detail

Gravel - No fines gravel (Permeable)

Synthetic timber decking

Concrete paving, refer Architects


Existing tree to be removed

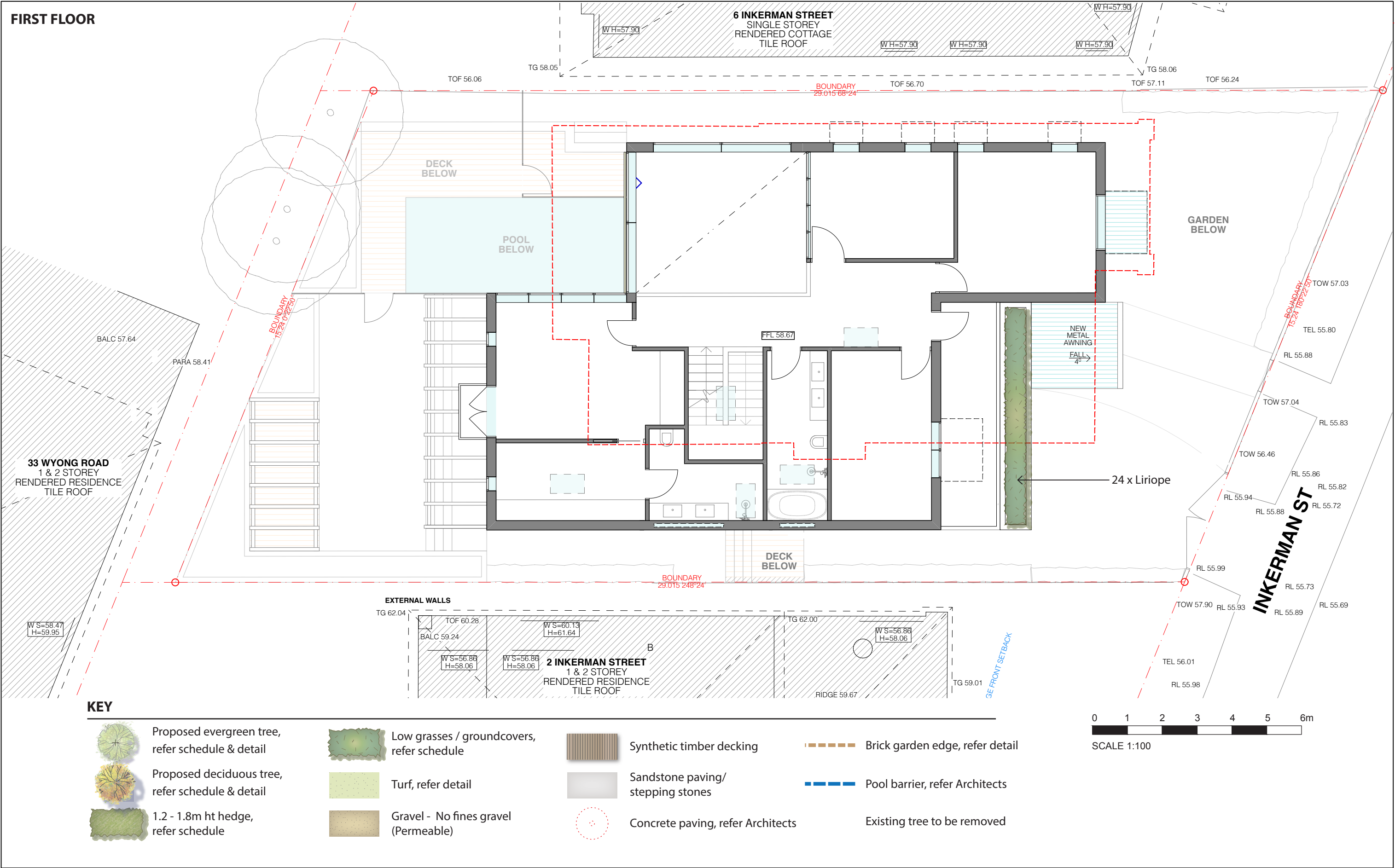
Brick garden edge, refer detail

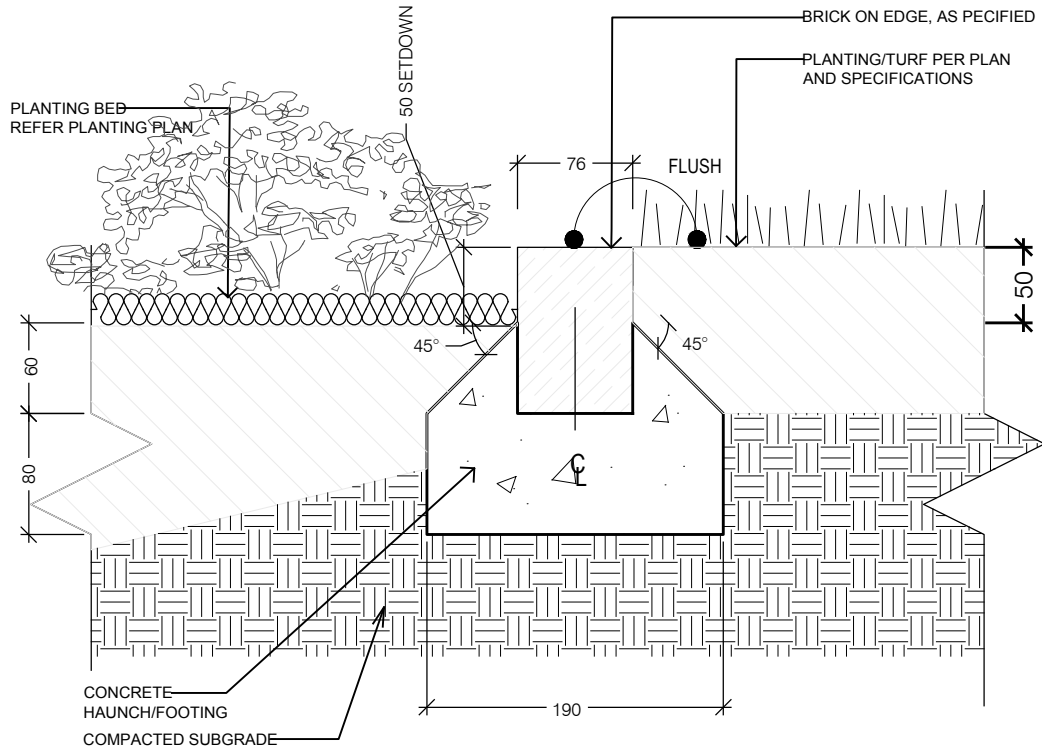
Pool barrier, refer Architects

0 1 2 3 4 5 6m

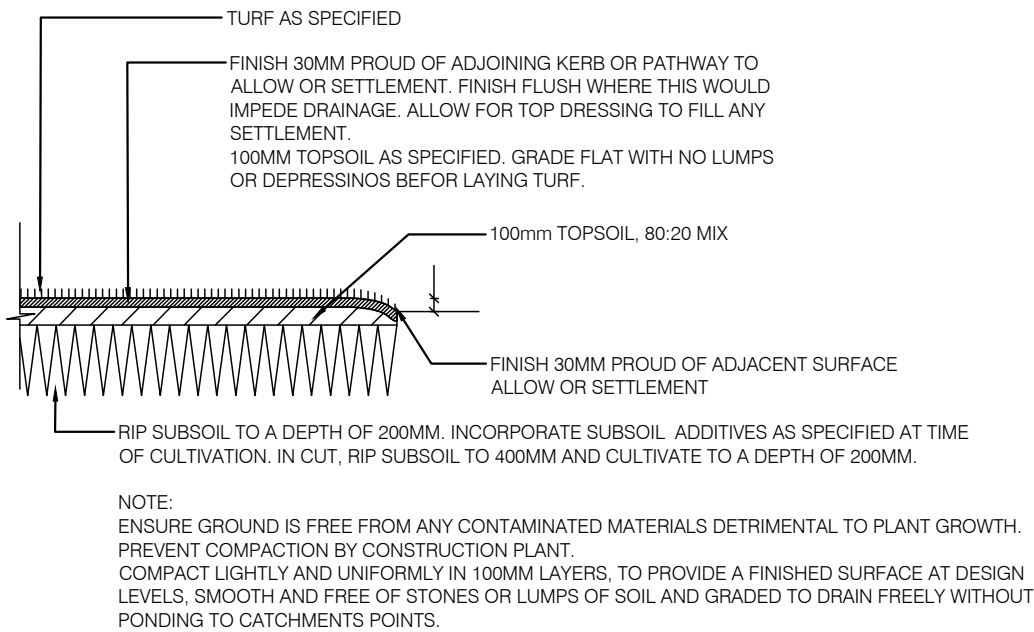
SCALE 1:100

<div><div>Paterson Design Studio</div><div>Landscape Architects / Urban Designers</div><div>Paterson Design Studio PTY. LTD 16a/1-15 Tramore Place Killarney Heights, NSW 2087.</div><div><small>Copyright by PDS Pty Ltd. This drawing, or parts thereof, may not be reproduced for any purpose without the consent of PDS Pty Ltd. It is implied and has legal backing. These drawings are to be read in conjunction with the specification and any other written instructions issued. Any discrepancies shall be referred to the Superintendent for a written decision prior to ordering supply/ installation/ construction.</small></div></div> <div>Registered Landscape Architect: Garth Paterson FAILA Reg#716 BLA (CANB) MLAUD (HARV)</div> <div>T +61 2 9452 4911 admin@pdsdesign.com.au www.pdsdesign.com.au</div>	<div>NOTES.</div> <div>DRAWINGS PRODUCED AND PRINTED COLOUR</div>	<table><tr><th>REV.</th><th>DESCRIPTION.</th><th>DWN.</th><th>CHK.</th><th>DATE.</th></tr><tr><td>A</td><td>Development Application Landscape Plan</td><td>FA</td><td>GP</td><td>27/05/20</td></tr><tr><td>B</td><td>DA Landscape Plan Amendments</td><td>DC</td><td>GP</td><td>01/06/20</td></tr><tr><td>C</td><td>DA Landscape Plan Amendments</td><td>DC</td><td>GP</td><td>24/06/21</td></tr></table>	REV.	DESCRIPTION.	DWN.	CHK.	DATE.	A	Development Application Landscape Plan	FA	GP	27/05/20	B	DA Landscape Plan Amendments	DC	GP	01/06/20	C	DA Landscape Plan Amendments	DC	GP	24/06/21	<div>PROJECT</div> <div>4 INKERMEN STREET, MOSMAN NSW 2088</div>	<div>CLIENT.</div> <div>JEHAN THIND & LAURA PARK</div>	<div>ARCHITECT.</div> <div>ROTH ARCHITECTS</div>	<table><tr><td>DWN.</td><td>CHK.</td></tr><tr><td>DC</td><td>GP</td></tr><tr><td colspan="2">DATE. 24/06/21</td></tr></table>	DWN.	CHK.	DC	GP	DATE. 24/06/21		<div></div>
	REV.	DESCRIPTION.	DWN.	CHK.	DATE.																												
	A	Development Application Landscape Plan	FA	GP	27/05/20																												
	B	DA Landscape Plan Amendments	DC	GP	01/06/20																												
C	DA Landscape Plan Amendments	DC	GP	24/06/21																													
DWN.	CHK.																																
DC	GP																																
DATE. 24/06/21																																	
					<div>DRAWING TITLE.</div> <div>LA-100 Landscape plan</div>	<div>SHEET. A3</div>	<div>REVISION.</div> <div>C</div>																										
					<div>SCALE. 1:100</div>	<div>PROJECT NO.</div>																											

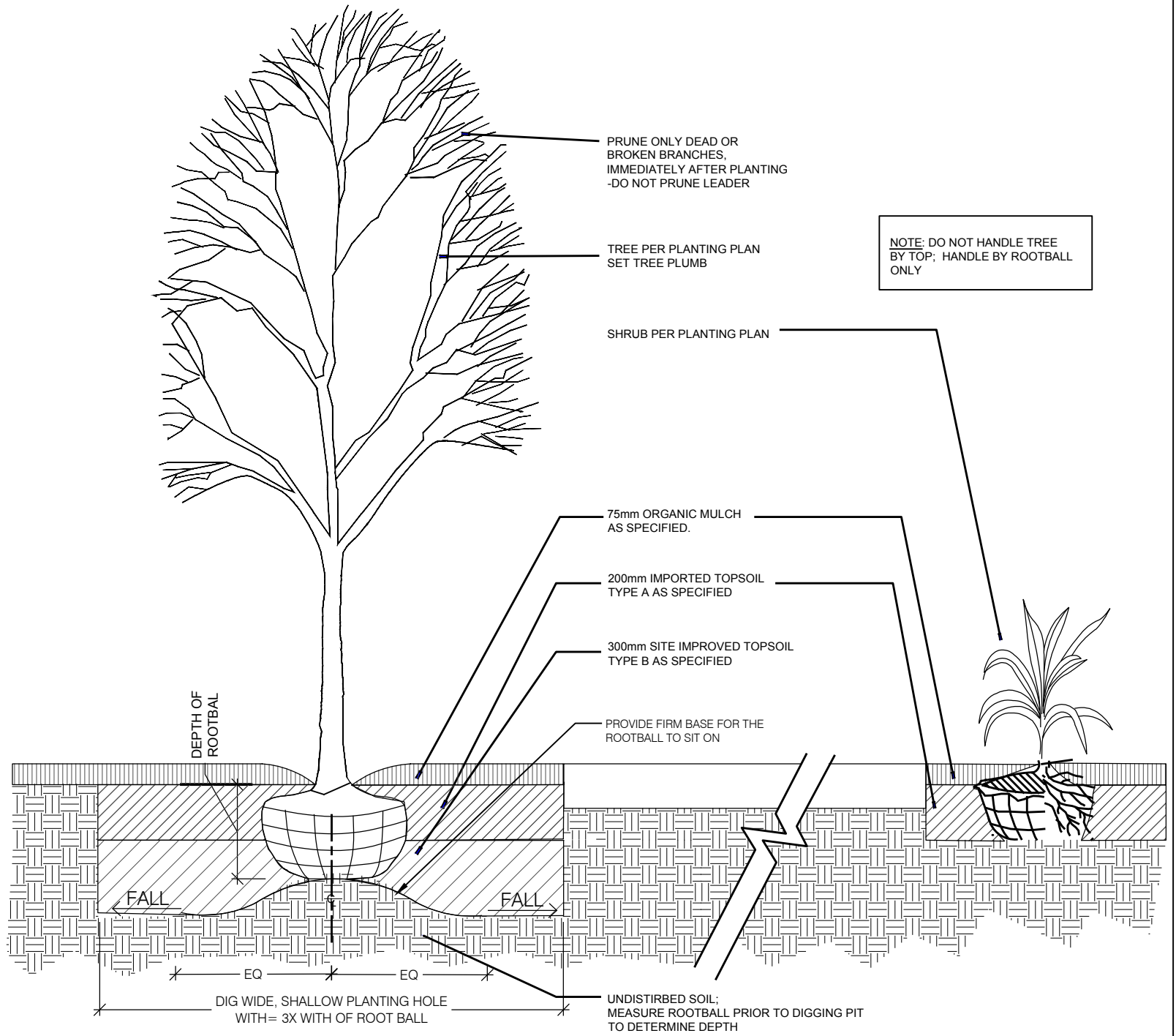




TYPICAL BRICK EDGER DETAIL - scale 1:5





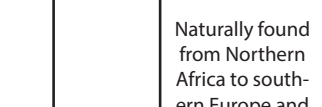
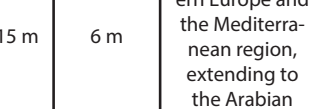
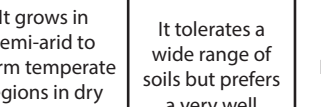
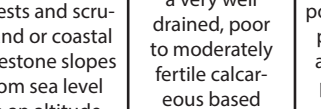
SITE PREPARATION TURF - NTS






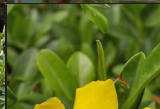


TREE AND SHRUB PLANTING - scale 1:20

REV.	DESCRIPTION.	DWN.	CHK.	DATE.
A	Development Application Landscape Plan	FA	GP	27/05/20
B	DA Landscape Plan Amendments	DC	GP	01/06/20
C	DA Landscape Plan Amendments	DC	GP	24/06/21

EVERGREEN & DECIDUOUS TREES

Ole eur	Olea europaea	Common Olive			5 - 15 m	6 m	Naturally found from Northern Africa to southern Europe and the Mediterranean region, extending to the Arabian Peninsula and southern Asia.	It grows in semi-arid to warm temperate regions in dry forests and scrubland or coastal limestone slopes from sea level to an altitude from 700m up to 3,000m	It tolerates a wide range of soils but prefers a very well drained, poor to moderately fertile calcareous based sandy-stony to loamy soil	It grows in an open to exposed hot sunny position tolerating drought, pollution and light frost.	Black & soft brown scale, olive lace bug, re-shoots after fire (coppice shoot)	It has a low water requirement once established (Scale: 1-drop from 3) preferring organic rich moist to dry soil and will tolerate prolonged dry periods.	Slow	Exotic
Tri lau	Tristania laurina	Water Gum			12m	8m	Small compact tree with light smooth bark and yellow flowers in Spring.	Dull green dense foliage, small yellow flowers during November to January.	Prefers moist fertile soils with good moisture levels in summer. Adaptable to a wide range of soil conditions.	Tolerant of low temperatures to minus 3°C. Prefers a sheltered spot.	No known susceptibility to any specific pests or diseases.	Regular watering during establishment. May require formative pruning to ensure development of a single trunk.	Fast	Native
Lag ind	Lagerstroemia indica x fauriei 'Natchez'	Crepe Myrtle			8m	6m	Smooth greyish trunk and spreading branches. Dark green foliage, produces clusters of white flowers during summer	White flowers from early January to April. Mid green foliage turning yellow, orange & scarlet in Autumn.	Moderately heavy clays & moist but well-drained alluvial soils.	Tolerant of light frosts to minus 3°C.	Susceptible to powdery mildew in high humidity.	Regular watering during establishment. Requires formative pruning to ensure development of a single trunk.	Long-lived – 50 years plus in urban areas. Moderate.	Exotic

HEDGE / CLIMBERS

Ban int	Banksia Integrifolia	Coastal Banksia			15-25m	5m	A gnarled trunk and a windswept appearance and forms a narrow rounded crown. It has dark green leathery leaves that are silvery underneath.	Yellow bottle brush-like flowers appear in early spring	It prefers a well drained moderately fertile sandy soil	Prefers an open sunny position tolerating drought, frost and salt laden winds.	Susceptible to web-covering borer, banksia longicorn, doubleheaded hawk moth, leaf spot.	It has a low water requirement once established, responding to mulch and an occasional deep watering during dry periods when young.	Medium	Native
Hib sca	Hibbertia scandens	Climbing Guinea Flower, Guinea Gold or Snake Vine			2-3m	2.5m+	twinning woody stems that scramble to form a dense cover. Dark glossy green leathery oval leaves and the large yellow wheel-shaped flowers	Large yellow wheel-shaped flowers appear solitary during spring or throughout the year in warm regions.	Well drained, moist sandy to clay loam, organic rich acidic	Salt-spray tolerant, drought tolerant, frost tender	Plague thrips, phytophthora root rot, grey mold, grapevine moth	It is used as a ground cover and as a spill-over in rockeries. Cut back after flowering	Fast	Native
Lau nob	Laurus nobilis	Bay laurel			5 - 6 m	4 m	This shrub to small tree has ascending branches that form a compact conical crown	It has glossy dark green aromatic elliptical leaves and the small yellow flowers appear in a cluster during spring and are followed by purplish black berries	Well drained clay to sandy loam, reliable moist, fertile	Full sun to semi-shade, light frost tolerant, pollution, drought, wind protection	White and pink wax scale, laurel psyllid, red and cottoncushion scale	Medium water use	Medium	Exotic









NOTES.

*DRAWINGS PRODUCED AND
PRINTED COLOUR*

REV	DESCRIPTION	DWN	CHK	DATE
A	Development Application Landscape Plan	FA	GP	27/05/20
B	DA Landscape Plan Amendments	DC	GP	01/06/20
C	DA Landscape Plan Amendments	DC	GP	24/06/21

PROJECT 4 INKERMANN STREET, MOSMAN NSW 2088	CLIENT. JEHAN THIND & LAURA PARK	ARCHITECT. ROTH ARCHITECTS	DWN. DC	CHK. GP	
			DATE. 24/06/21		
		DRAWING TITLE. LA-300 Planting schedule	SHEET. A3		REVISION. C
			SCALE.		PROJECT NO.

LOW SHRUBS | GROUNDCOVERS

Lir mus	Liriope muscari	Lily Turf, Big Blue lilyturf	 	0.3 - 0.45 m	0.5 m	This tuberous perennial has a tufted habit with upright dark green strap-like leaves.	The small violet-mauve cup-shaped flowers appear in a raceme above the foliage from mid to late summer.	Well drained fertile sandy-clay loam, moist.	Semi-shade, moderately drought and frost-cold tolerant, wind protection	Slugs and snails cause damage on young plants	Establish clumps require little maintenance and have a medium water requirement once established.	Medium	Exotic
Iri ger	Iris germanica	Bearded Iris	 	0.6 - 1 m	0.5 m	It is naturally found in Europe where it is a natural hybrid between Iris pallida and Iris variegata.	The German Iris is grown for its flowers and clumping habit.	It prefers a well drained fertile organic rich moist sandy to clay loam with a pH range from 6.0 to 7.0.	It grows in a wind protected semi shaded to sunny position and is frost tolerant but drought tender and dislikes wet soils.	Leaf spot, aphids, rust, leaf scorch, soft & rhizome rot, thrips, borers	Once established it has a high water requirement (Scale: 3-drops from 3), responding to reliable soil moisture.	Fast	Exotic
Sal ros	Salvia rosmarinus	Rosemary	 	1.5-2 m	4 m	Is naturally found in the western and central Mediterranean region from Turkey to Spain, southern France and Italy.	It has small light grey-green leaves and the purple 2-lipped flowers appear abundantly towards the end of the branches from spring to summer.	Well drained moderately fertile moist-dry sandy-stony soil	Full sun to semi shade, exposed position, salt, drought and frost resistant	Phytophthora root rot, crown rot	It has a low water requirement once established.	Fast	Native
Sen cin	Senecio cineraria	Dusty Miller	 	0.4 - 1 m	0.6 m	Is naturally found in the western and central Mediterranean region from Turkey to Spain, southern France and Italy.	The Silver Ragwort is commonly grown for its foliage, whitish stems and its yellow flower heads.	It prefers a moderately fertile well drained sandy-stony to clay loam that is reliable moist with a pH range from 5.5 to 7.5 and tolerates chalky soil.	It grows in an open sunny position and is slightly frost and drought tolerant once established.	Susceptible to rust, white flies, grey mould, downy & powdery mildew	Once established it has a low water requirement (Scale: 1-drop from 3) and in cold regions it is commonly used as an annual.	Medium	Exotic

REV.	DESCRIPTION.	DWN.	CHK.	DATE.
A	Development Application Landscape Plan	FA	GP	27/05/20
B	DA Landscape Plan Amendments	DC	GP	01/06/20
C	DA Landscape Plan Amendments	DC	GP	24/06/21

DWN. DC	CHK. GP	
DATE. 24/06/21		
SHEET. A3		
SCALE.		